



Recent discoveries of biological factors underlying Parkinson's disease and development of reliable tests for them have allowed researchers to propose new systems for defining the stages of the debilitating, incurable neurological disorder

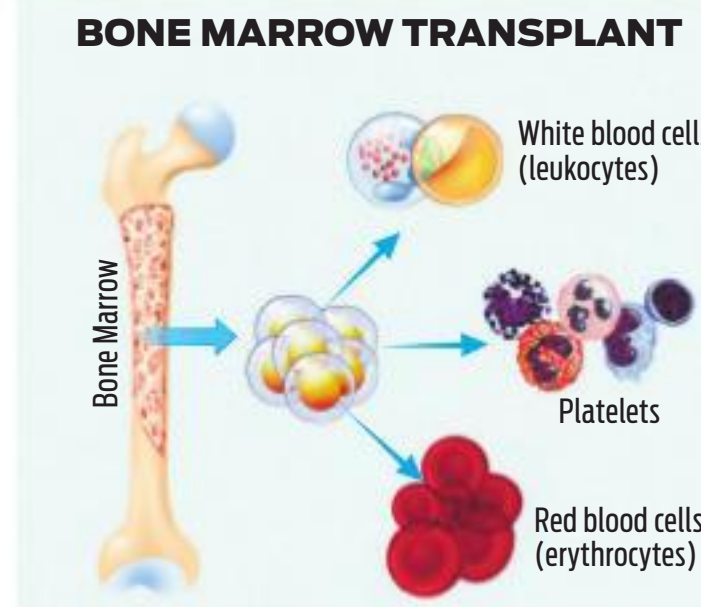


BEYOND BONE MARROW TRANSPLANT

NEW THERAPIES IMPROVE SICKLE CELL ANAEMIA CARE OUTCOMES

ASHISH SRIVASTAVA @ New Delhi

SICKLE cell anaemia (SCA) is a genetic blood disorder that affects millions worldwide. Traditionally, managing this condition has been challenging, but recent breakthroughs in medical research have paved the way for innovative treatments.



Complications may include high risk of pre-eclampsia, preterm labour, growth retardation in the baby and high likelihood of miscarriage. Speaking on new therapeutic options available, Dua said, "We have new therapeutic options like gene therapy. Though they are very expensive, they are new kids on the block."

LATEST INTERVENTIONS

GENE THERAPY: Involves modifying the patient's own cells to correct the genetic mutation responsible for sickle cell anaemia (SCA). Experimental trials have shown encouraging results, with some patients experiencing a significant reduction in symptoms and improved quality of life.

CRISPR TECHNOLOGY: The revolutionary CRISPR-Cas9 gene-editing technology has opened new possibilities for treating SCA. Researchers are exploring ways to precisely edit the defective genes responsible for abnormal haemoglobin in sickle cell patients.

FOETAL HAEMOGLOBIN INDUCTION: Foetal haemoglobin (HbF) has been identified as a naturally occurring form of hemoglobin that can inhibit the polymerisation of sickle haemoglobin. Recent research has focused on developing drugs that stimulate the production of foetal haemoglobin in adult patients.

ANTI-ADHESIVE THERAPIES: Vaso-occlusion, the blockage of blood vessels by sickle cells, is a hallmark of SCA. New treatments are targeting the adhesion of sickle cells to blood vessel walls, preventing the formation of clots and improving blood flow.

PRE HOSPITAL CARE

Ambulance with advanced life support improves survival rate by up to 20%

SINDUJA JANE @ Chennai

PRE-HOSPITAL care is very crucial for any patient to reduce mortality, say doctors. The Golden Hour management starts the moment a patient lands in a health emergency - like road accident, heart attack, stroke, sepsis, asthma or any life threatening illness.

Pre hospital care is highly specialised nowadays, including advanced medical technology and mobile medical units which includes life saving equipment like defibrillator, ventilator, monitors, infusion pumps, suction apparatus, oxygen cylinders, ECG, glucometer and medications required during transfer of critically-ill patients.



LIFE SAVERS

DEFIBRILLATORS

Used to apply electric charge to the heart to restore normal heartbeat, if the heart rhythm stops

INFUSION PUMP

A device used to deliver fluids into a patient's body in a controlled manner

SUCTION APPARATUS

Used to take out fluids like vomit, blood, saliva, serum or other secretions or gases from the body cavities

GLUCOMETER

To measure glucose level in the blood

"The Society for Emergency Medicine India released the document on quality upgrade enabled through space technology 'Excellence unveiled: A comprehensive guide to quality standards and practices in emergency department - Learnings from ISRO,' which acts as an implementation tool in emergency department," said Dr Saravana.

Advertisement for ISRO tendering process for painting external surfaces of Qtrs at PCN colony, Sullurpeta. Includes details on tendering process and contact information.

Advertisement for Name Change service for Gayathri Kalaivani Muralidharan. Includes details on the process and contact information.

Advertisement for PSPCL Punjab State Power Corporation Limited tendering process for Short Term E-Tender. Includes details on tendering process and contact information.

Advertisement for PSPCL Punjab State Power Corporation Limited tendering process for Short Term E-Tender. Includes details on tendering process and contact information.

Advertisement for Bangalore Development Authority (BDA) tendering process for development of peripheral ring road to Bengaluru City. Includes details on project, tendering process, and contact information.

Advertisement for 'All the news. In just a click.' with a QR code linking to newindianexpress.com.

Advertisement for Government of Odisha Office of the Chief Construction Engineer Rural Works Circle, Angul. Includes details on tendering process and contact information.

Advertisement for Government of Odisha Office of the Chief Construction Engineer Rural Works Circle, Sundargarh. Includes details on tendering process and contact information.

Advertisement for Omkara Assets Reconstruction Pvt. Ltd. regarding the sale of immovable assets. Includes details on the auction process and contact information.

Advertisement for Omkara Assets Reconstruction Pvt. Ltd. regarding the sale of immovable assets. Includes details on the auction process and contact information.